



EXCALIBUR

TRUCK ACCESSORIES

2019+ DODGE RAM 1500

RUNNING BOARD INSTALLATION GUIDE

**EXCALIBUR RESEARCH DEVELOPMENT AND
MANUFACTURING**

**TECH SUPPORT
TEXT OR CALL 1 512 870 7828**

EXCALIBURRDM@GMAIL.COM

**IF YOU HAVE ANY
QUESTIONS PLEASE GIVE US A CALL.**

EXCALIBURTRUCKUSA.COM



TOOLS REQUIRED

10mm Socket or Combination Wrench

18mm Socket with 24" extension.

Breaker bar.

Box cutter or sharp knife

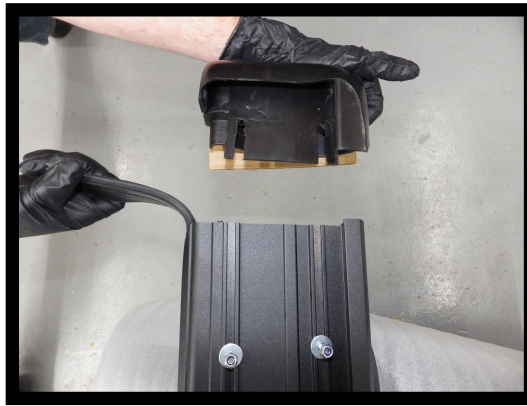
OPTIONAL: Wax based under coating to cover brackets and hardware at the end of the install.

NOTE : A POWER DRILL OR POWER DRIVE WILL SPEED UP THE INSTALLATION.

PLEASE NOTE: IF POWER TOOLS ARE USED, TAKE CARE TO ENSURE NOT TO STRIP OR OVER TIGHTEN THE HARDWARE.

PARTS LIST

QTY	DESCRIPTION
2	Running Boards
2	Mudguards
1	Cab Bracket Kit
1	Rear Bracket Kit
1	Light Kit (if applicable)



1. ASSEMBLE THE RUNNING BOARDS.

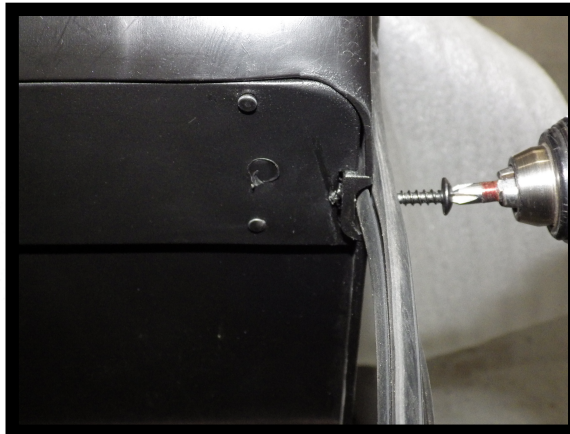
Install the mud guards on the running boards prior to installation.

Locate and identify the left and right mud guard.



2. PUSH THE MUD GUARDS ON TO THE RUNNING BOARDS

Push the mud guards on to the running board until they bottom out and secure using the hardware located at the rear of the running board.



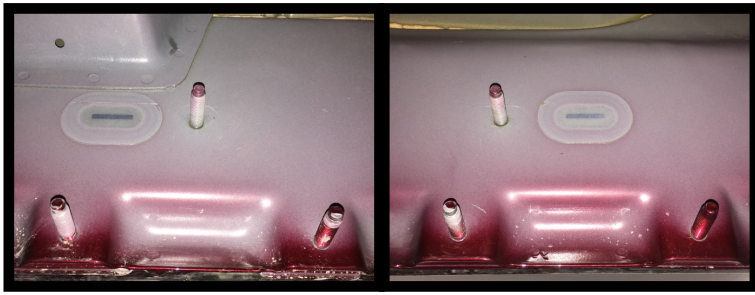
3. SECURE RUBBER FILLER STRIP TO THE MUD GUARDS.

Using the pre installed SS self taper secure the rubber filler strip to the mudguards.



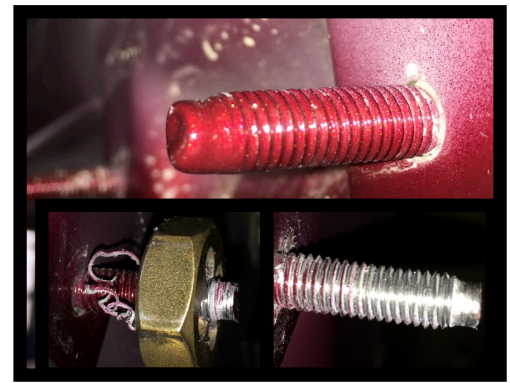
4. SACRIFICIAL CARDBOARD

We have installed a sacrificial piece of cardboard on the mudguards. The intention is to prevent scratches during install. Leave this in place until the installation is complete and you are ready to secure the mudguards.



1. LOCATE CAB BRACKET MOUNTING LOCATIONS.

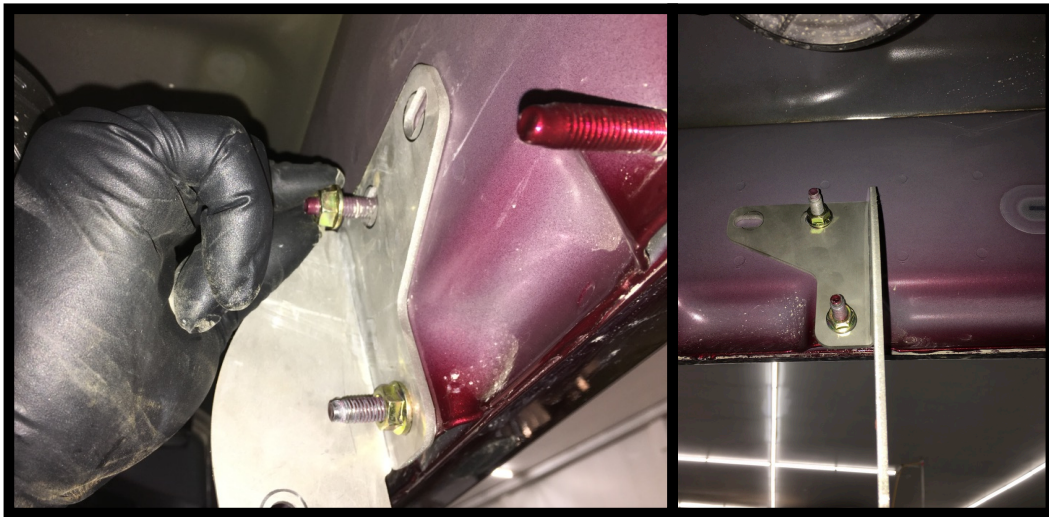
Located on the sill of the vehicle there will be three factory mounting locations. There are two different stud positions. The same bracket will fit both configurations.



2. PREPARE HARDWARE.

The factory hardware is heavily coated in paint. There is a good chance that the stud may become stripped or break if not cleaned before tightening.

Clean the threads of the studs to be used using a M8x1.25 die or a wire brush prior to install of brackets.



3. POSITION THE CAB BRACKETS FRONT TO REAR.

Install the cab brackets 3 per side using the supplied M8 flanged nuts. See below for bracket placement and position.

PASSENGER.

FRONT-REAR

DRIVER.

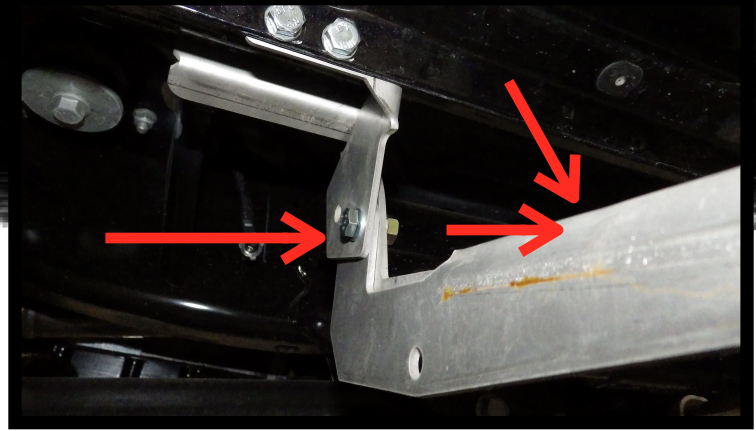
FRONT-REAR





4. TIGHTEN THE CAB MOUNTED BRACKETS.

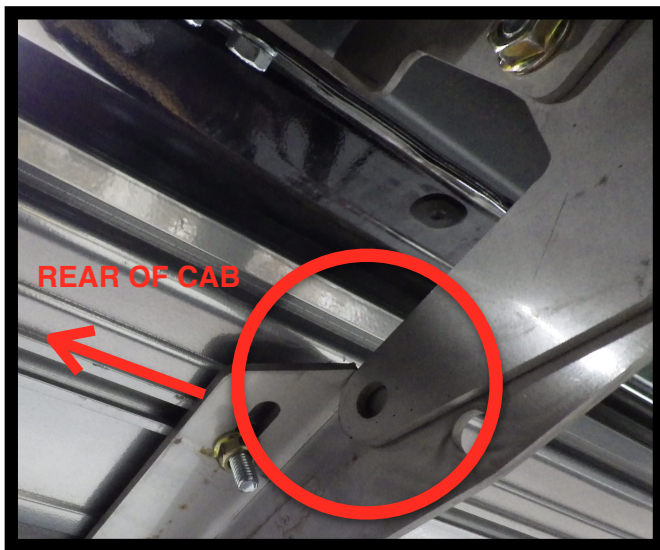
With all the cab brackets mounted in the correct orientation, tighten the M8 flanged nuts.



5. (A) ADD THE BASE BRACKETS.

With the cab bracket supports mounted, add the base brackets using the supplied M8X20 bolts and supplied flanged nuts. To correctly place the brackets, have the tab with the slotted holes facing towards the rear of the truck as shown in the picture above.

When adding the base brackets, use the middle hole in the bracket set. However, do not tighten and allow the bracket to pivot down and touch the cab bracket. This will make mounting the running boards to the base brackets far more simple.



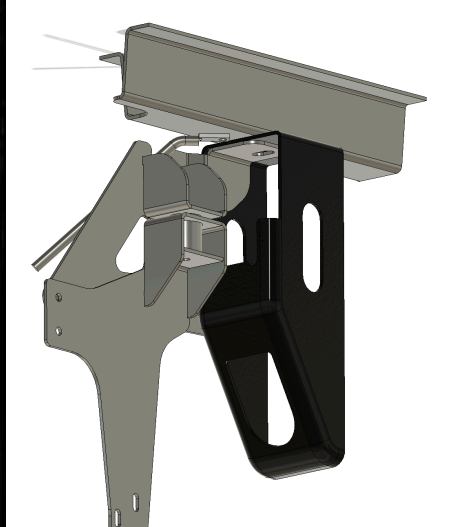
5. (B) BASE BRACKET

When adding the base brackets use the middle hole in the bracket set. However, do not tighten and allow the bracket to pivot down and touch the cab bracket.

The base bracket was designed to pivot here to aid in the placement of the running board on the brackets and the placement of the rubber seal.

NOTE: 5.8' BOXES DO NOT REQUIRE REAR BRACKETS AS THERE ARE ONLY 2 STEPS AND NO BOX MOUNTED STEP.

6.6' & 8' BOX ONLY. REAR BRACKET INSTALLATION.



**PASSENGER SIDE
REAR BRACKET**



The Patented Rear Flex Bracket has been designed to flex with the box of the vehicle while still providing the necessary support for the 3rd step.

QTY	DESCRIPTION
1	PRE ASSEMBLED DRIVER SIDE BRACKET
1	PRE ASSEMBLED PASSENGER SIDE



1. LOCATE AND REMOVE THE DRIVER AND PASSENGER BOX MOUNT BOLTS.

On both driver and passenger remove the factory box mounting bolts, located inside of the boxed in bracket welded to the frame.

TIP: Use a 12" extension with a 18mm socket fed through the bottom of the bracket.



2. INSTALL THE REAR BRACKETS USING THE FACTORY REMOVED BOX MOUNT BOLT.

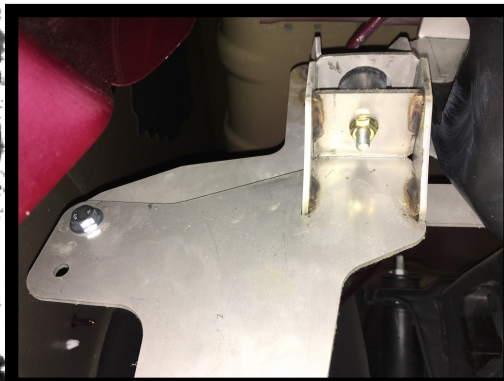
Using the factory bolt install the rear brackets, leave the hardware slightly loose until the M8 bolt is tightened.

THE BRACKET ON THE LEFT IS PASSENGER SIDE.



3. BOLT THE REAR BRACKETS TO THE CHASSIS.

Using the supplied M8 Flange nut and M8X20 bolt, tighten the backside of the bracket to the chassis of the vehicle.



4. BOLT THE REAR BRACKETS TO THE TOP MOUNT SECTION.

Using the supplied M8 Flange nut secure the rubber isolator to the top section of the rear bracket.

Using the supplied M8X20 bolt, washer, and Nylock nut, bolt the outer side of the rear bracket to the top mount.

NOTE: A NYLOCK NUT MUST BE USED IN THE HOLE SHOWN ON THE LEFT. THE BRACKET WILL PIVOT HERE WHEN STEPPED ON AND A FLANGED NUT WILL COME LOOSE HERE.

REPEAT FOR DRIVER SIDE



www.excaliburtruck.ca



7. PLACE THE RUNNING BOARD ON THE BRACKETS.

With the rear bracket install complete, place the running boards on the base brackets, aligning the T-Bolts with the slots in the bracket.



8. SNUG THE BOLTS ATTACHING THE RUNNING BOARDS TO THE BRACKETS.

With the running board placed on all the cab brackets secure the running boards to the brackets. Slide the running board to the outside of the vehicle for now. Once the board has been pivoted in to place and tightened they can be readjusted.



9. PIVOT THE RUNNING BOARD INTO PLACE.

With the running board tightened to the base brackets, pivot the running board upward by pushing up on the running board until the holes are aligned and insert the supplied M8X20 bolts and flange nuts.

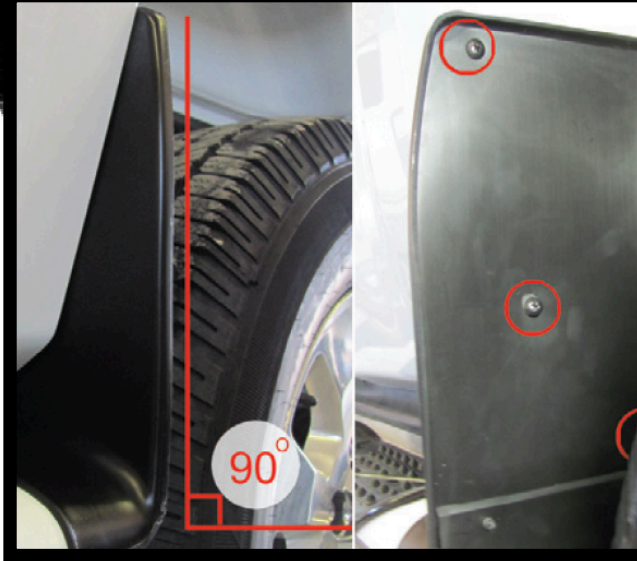


10. TIGHTEN THE BASE BRACKETS TO THE CAB BRACKETS.

Tighten the base bracket to the cab brackets.

If any adjustments need to be made inward or outward they can be done now.

Take a minute to ensure all the brackets are in line and the running boards are not distorted in any way. If any adjustment is needed, loosen one bracket at a time until the issue is corrected.



11. SECURE THE MUD GUARDS TO THE WHEEL WELL OF THE VEHICLE.

Remove the protective cardboard from the rear mud-flaps. Align the mud flaps so the straight edge is at 90 degrees to the ground or in line with the rear wheels. Fasten the mud-flaps using the supplied SS self drilling screws.

THE INSTALL SHOULD NOW BE COMPLETE.

PLEASE PASS THIS BOOKLET ON TO THE END USER AS IT HAS INFORMATION ON MAINTENANCE AND WARRANTY.

***FOR ANY TECHNICAL DIFFICULTIES PLEASE PHONE
EXCALIBUR TRUCK ACCESSORIES***

1 512 870 7828

WARRANTY

MAINTENANCE

To ensure your Excalibur Running Boards maintain their factory finish be sure to clean your running boards on a regular basis. For a long lasting finish, simply clean the running boards with hot soapy water and spray a long lasting wax or ceramic coating, then remove with a non abrasive cloth. Avoid using soaps and chemicals with caustic soda, such as engine cleaners, as this may result in discolouration to the finish. Also, avoid using soaps, waxes and polishes with abrasive properties.

POLISHED SILVER FINISH WARRANTY

Excalibur Running Boards guarantees the original purchaser a 3 year warranty against manufacturer defects in workmanship and plastic materials. The polished silver finish is subject to a limited 1 year warranty against discolouration and corrosion.

This warranty covers the cost of the defective part(s) and not the cost of removal or installation, shipping, or incidental charges. This warranty is limited to replacement of the product, carries no cash value and is limited to the purchase price.

SANDEX BLACK AND GLOSS WHITE FINISH WARRANTY

Excalibur Running Boards guarantees the original purchaser a 3 year warranty against manufacturer defects in workmanship and plastic materials. The powder coated finish is subject to a limited 3 year warranty against discolouration and corrosion.

This warranty covers the cost of the defective part(s) and not the cost of removal or installation, shipping, or incidental charges. This warranty is limited to replacement of the product, carries no cash value and is limited to the purchase price.

STAINLESS STEEL BRACKET WARRANTY

Excalibur Running Boards guarantees the original purchaser limited lifetime warranty against manufacturer defects in workmanship and materials. This warranty covers the cost of the defective part(s) and not the cost of removal or installation, shipping, or incidental charges. This warranty is limited to replacement of the product, carries no cash value and is limited to the purchase price.

LED LIGHT WARRANTY

Excalibur Running Boards guarantees the original purchaser limited 1 year warranty against manufacturer defects in workmanship and materials. This warranty covers the cost of the defective part(s) and not the cost of removal or installation, shipping, or incidental charges. This warranty is limited to replacement of the product, carries no cash value and is limited to the purchase price.

All warranty claims will be initiated at the place of purchase. The original purchaser will be required to present the original sales receipt with the purchase date shown and provide photographs of the defect. All warranty replacement requests must be submitted via email to excaliburrdm@gmail.com.

The following terms and conditions apply to this warranty;

This warranty is only in effect to the original purchaser and shall not apply if the Excalibur Running Boards have been removed from the original vehicle which they were installed on.

The warranty is void from any accident, improper installation, modifications, misuse, abuse or neglect, chemical spills, vandalism, lack of maintenance, road hazards and debris, or any other use not intended for the purpose of running boards.

DISCLAIMER

Buyer assumes all risk and liability for the installation and use of Excalibur products.

Excalibur Research Development & Manufacturing Ltd assumes no liability for injury, loss, incidental or consequential damages in the event of an accident. Excalibur Running Boards are designed to help protect a vehicles exterior finish but should not be relied upon as protection for the vehicle or its occupants in the event of an accident. Excalibur Running Boards does not guarantee the protection of the exterior surfaces of the vehicle.

Thank you for choosing Excalibur Running Boards.

REV APR 1 2021